



Spring 2013  
**Monterey Cliffs**

4/25/13 - 6/25/13

*Bobby Jones*<sup>®</sup>



# MONTEREY CLIFFS

4/25/13

Spring 2013



## SOLID LIQUID COTTON 100% PIMA COTTON

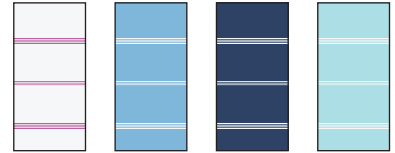


3 BUTTON POLO  
**BJE 23402**  
50100237\*  
337950

WHITE 100\*  
NEWPORT 392  
NAVY 400\*  
COBALT 415  
SEABREEZE 549  
AZALEA 615



## LIQUID COTTON TRIPLE BAR STRIPE 100% PIMA COTTON

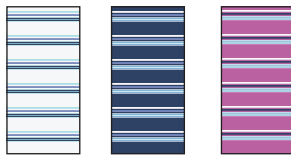


3 BUTTON POLO  
**BJE 23323**  
3685

CLOUD 386  
NEWPORT 392  
COBALT 415  
SEABREEZE 549



## LIQUID COTTON CLIP STRIPE 100% PIMA COTTON

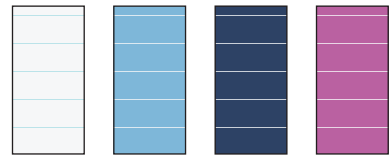


3 BUTTON POLO  
**BJE 23324**  
3685

CLOUD 386  
COBALT 415  
AZALEA 615



## FEEDSTRIPE 100% EGYPTIAN COTTON

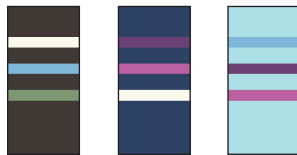


3 BUTTON POLO  
**BJE 23401**  
41509850

CLOUD 386  
NEWPORT 392  
COBALT 415  
AZALEA 615



## TRIPLE BAR MULTI STRIPE 100% EGYPTIAN COTTON

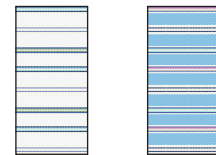


3 BUTTON POLO  
**BJE 23316**  
41509850

MAHOGANY 255  
COBALT 415  
SEABREEZE 549



## ULTIMATE PIQUE MULTI STRIPE 100% EGYPTIAN COTTON

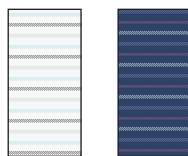


3 BUTTON POLO  
**BJE 23317**  
41509850  
SELF COLLAR

CLOUD 386  
NEWPORT 392

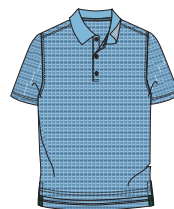


## TWILL MULTI STRIPE 100% EGYPTIAN COTTON

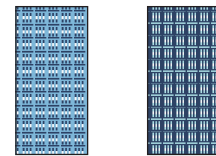


3 BUTTON POLO  
**BJE 23318**  
41509850

CLOUD 386  
COBALT 415



## GOLF TEE JACQUARD 100% EGYPTIAN COTTON



3 BUTTON POLO  
**BJE 23319**  
41509850

NEWPORT 392  
COBALT 415

\* "Basics Program"



# MONTEREY CLIFFS

4/25/13

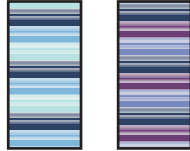
Spring 2013



3 BUTTON POLO  
**BJE 23335**  
41509850

### CHAMPIONSHIP STRIPE

100% EGYPTIAN COTTON



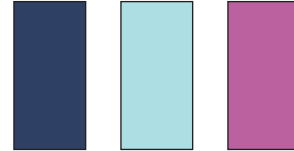
NEWPORT 392 COBALT 415



3 BUTTON POLO  
**BJE 23440**  
34508250  
SELF COLLAR

### XH2O SOLID REVERSE MESH DRI-BALANCE

55% PIMA COTTON / 45% POLYESTER



COBALT 415 SEABREEZE 549 AZALEA 615



3 BUTTON POLO  
**BJE 23343**  
3685  
SELF COLLAR

### XH2O DRI-BALANCE EVEN FEED STRIPE

64% PIMA COTTON / 36% POLYESTER



COBALT 415 SEABREEZE 549 AZALEA 615



3 BUTTON POLO  
**BJE 23445**  
5X100350\*  
315075

### XH2O COOL PLUS EYELET PIQUE

100% POLYESTER



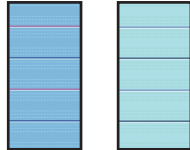
WHITE 100\* NEWPORT 392 NAVY 400\* COBALT 415 SEABREEZE 549 AZALEA 615



3 BUTTON POLO  
**BJE 23334**  
34508250

### XH2O COOL PLUS TEXTURED MULTI STRIPE

100% POLYESTER



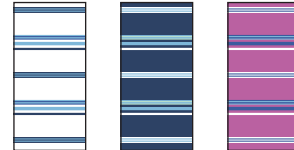
NEWPORT 392 SEABREEZE 549



3 BUTTON POLO  
**BJE 23336**  
337950

### XH2O COOL PLUS SUDDEN DEATH STRIPE

100% POLYESTER



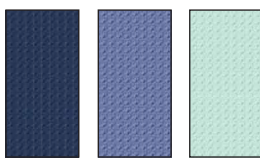
CLOUD 386 COBALT 415 AZALEA 615



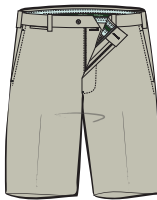
1/4 ZIP VEST  
**BJE 48404**  
4850115

### SOLID PIQUE VEST

100% PIMA COTTON



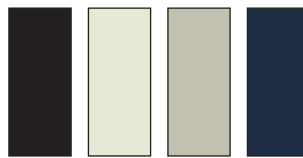
COBALT 415 WISTERIA 507 SEABREEZE 549



FLAT FRONT SHORT (21")  
**BJE 37102**  
37508950

### XH2O NANOTEK SHORT

100% POLYESTER



BLACK 001 STONE 051 KHAKI 251 NAVY 400



FLAT FRONT SHORT (21")  
**BJE 37309**  
41509850

### PLAID SHORT

99% COTTON / 1% SPANDEX



IRIS 534

\* "Basics Program"



# MONTEREY CLIFFS

4/25/13

Spring 2013



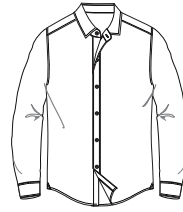
BUTTON DOWN COLLAR  
**BJE 54301**  
53125

### SPRING PLAID

100% COTTON



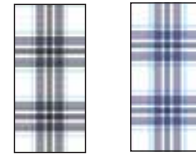
LIGHT GREEN 362    HIBISCUS 654



SPREAD COLLAR  
**BJE 54306**  
53125

### FAIRWAY PLAID

100% COTTON



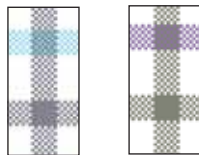
GREY 031    WISTERIA 507



BUTTON DOWN COLLAR  
**BJE 54309**  
61145

### PAR PLAID

100% LINEN



NEWPORT 392    GARNET 603



BUTTON DOWN COLLAR  
**BJE 54410**  
53125

### PRO PLAID

100% COTTON



AQUAMARINE 443



SPREAD COLLAR  
**BJE 54311**  
53125

### SCRATCH PLAID

100% COTTON



AQUAMARINE 443



BUTTON DOWN COLLAR  
**BJE 54312**  
53125

### WEDGE PLAID

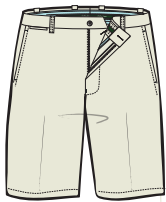
100% COTTON



TURQUOISE 444    WISTERIA 507

### HX20 POLY TWILL DOUBLE POCKET SHORT

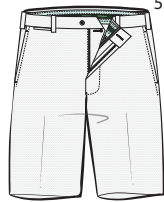
100% POLYESTER



FLAT FRONT SHORT (21")  
**BJE 37105**  
53125



BLACK 001    STONE 051



FLAT FRONT SHORT (21")  
**BJE 37107**  
53125

### COTTON/ LINEN SHORT

53% COTTON / 47% LINEN



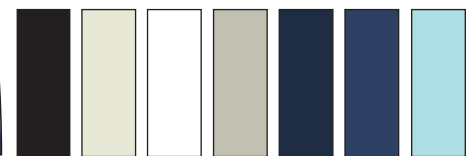
WHITE 100    LT. BEIGE 291



FLAT FRONT SHORT (21")  
**BJE 37403**  
37508950

### GARMENT DYED SHORT

100% COTTON



BLACK 001    STONE 051    WHITE 100    KHAKI 251    NAVY 400    COBALT 415    SEA-BREEZE 549